



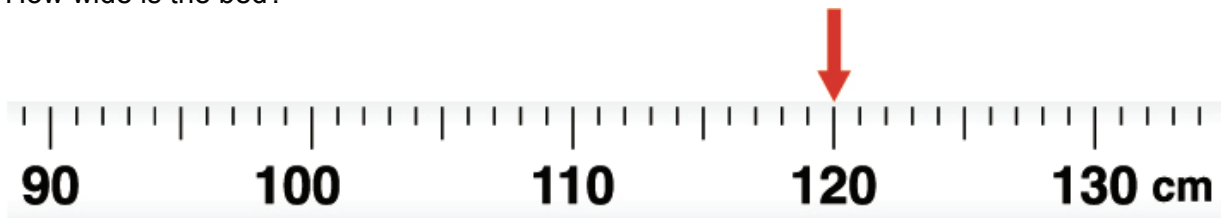
Progress check: Entry 3 numeracy

Length, weight and capacity

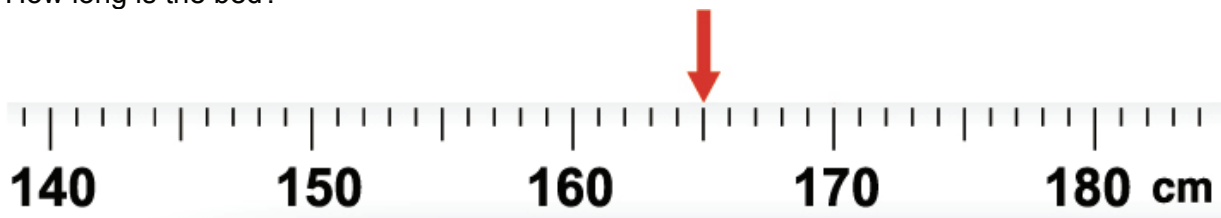
Short task

1 Martin wants to grow fruit and vegetables in his garden. He starts by measuring the length and width of his vegetable bed.

a How wide is the bed?

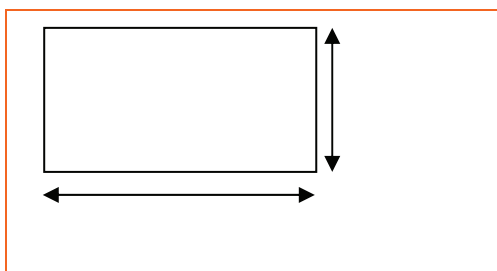


b How long is the bed?



Write your answers here:

c Mark these measurements on Martin's sketch plan of his garden.



d How **wide** is the vegetable bed to the nearest metre?

Write your answer here:

e How would you write the **length** of the vegetable bed in metres and centimetres?

Write your answer here:

2 Martin is planting beans in rows. The rows need to be 20 cm apart.

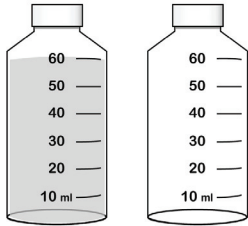


a How many rows will he fit in one metre?

Write your answer here:

_____ rows

3 He uses liquid fertiliser to help his tomatoes to grow.
He needs to mix 10 ml of fertiliser with 7 litres of water.

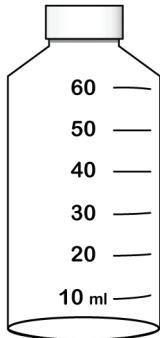


a How much fertiliser is in the bottle?

Write your answer here:

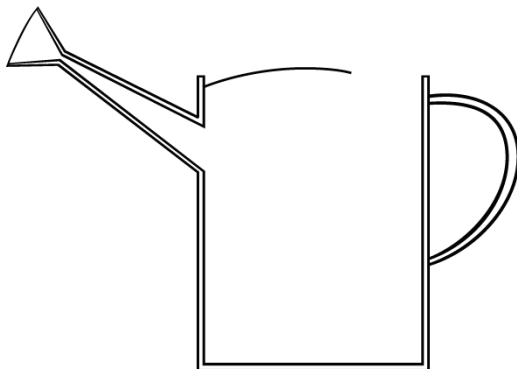
--

b Mark the level of the fertiliser in the bottle **after** he has poured out 10 ml of the fertiliser.



c His watering can holds 10 litres of water.

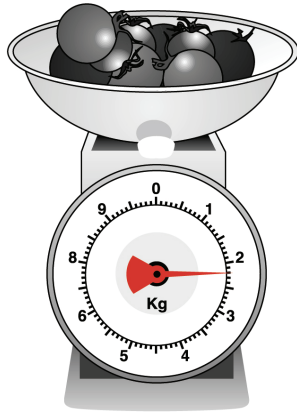
Mark roughly how full it will be when he has filled it with 7 litre of water.



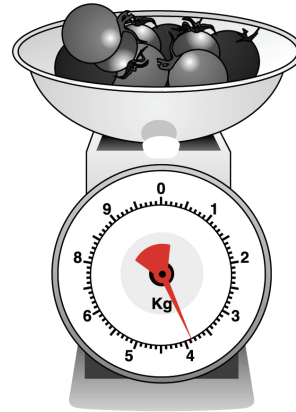
4 He weighs his first two crops of tomatoes.

These scales show the weight of tomatoes he gets in each of the first two weeks:

Week 1
tomato crop



Week 2
tomato crop



a Write the weights of his tomato crops **to the nearest kilogram** into his gardening notebook:

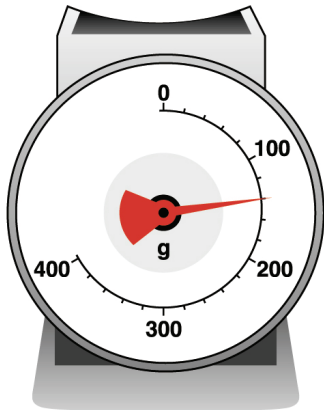
Tomato crop 2007

Week 1 _____ kg

Week 2 _____ kg

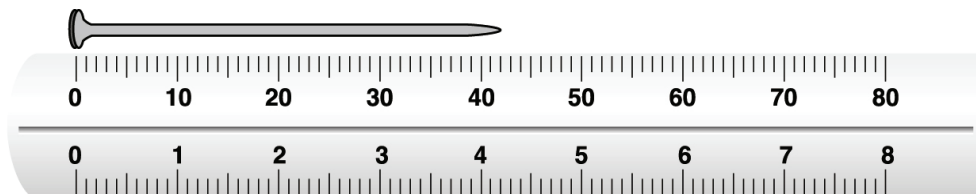
Mini-test: Length, weight and capacity (Entry 3)

1 What weight does this scale show?



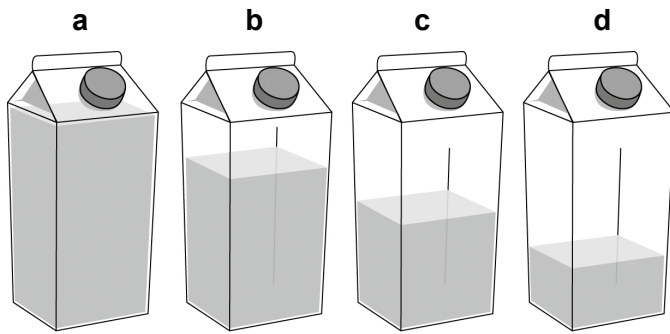
- a 120 g b 125 g c 140 g d 150 g

2 How long is this nail **in millimetres**?

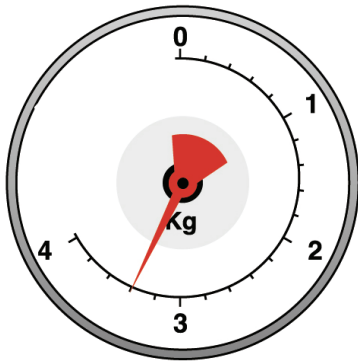


- a 42 mm b 45 mm c 4 cm d 4.2 cm

3 Which of these 1 litre cartons contains 750 ml of juice?



4 How many kilograms does this scale read to the nearest $\frac{1}{2}$ kilogram?



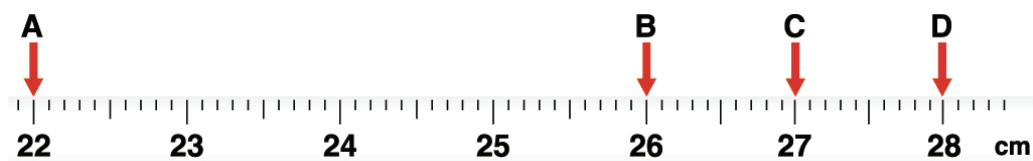
- a 3 kg b 2 kg c 2.5 kg d 3.5 kg

5 How far is the village of Bealey from Ashton?



- a 5 cm b 5 km c 5 miles d 500 metres

6 Which mark indicates 27 cm on this tape measure?



- a A b B c C d D